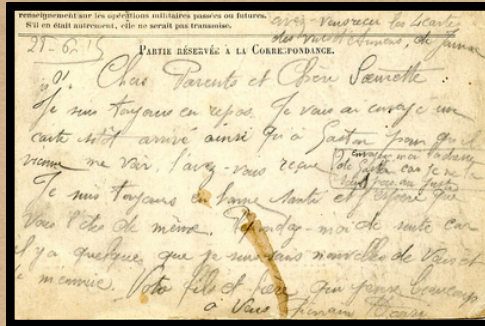
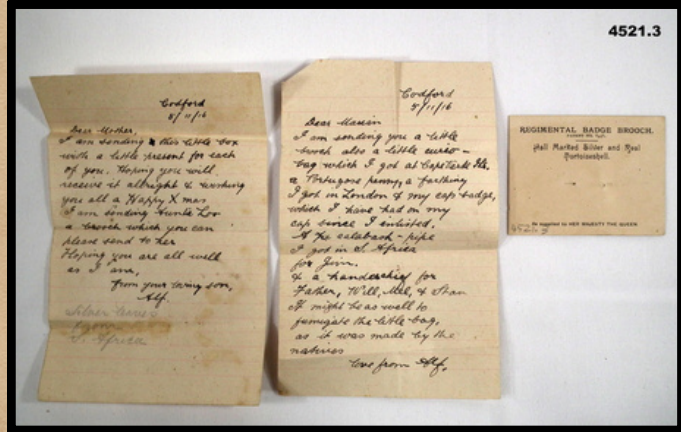


Love's Labor's Won Prop Book



Director: Dana Dancho
Scenic Designer: Emily Lotz
Properties Designer: Mattie Ruona
Assistant Properties Designer: Elliot Cross

Letter



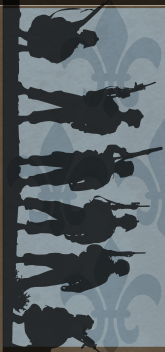
| Page # | Act | Type | Quantity |
|--------|-----|-----------|----------|
| 36 | 1.3 | Hand Prop | 1 |

Notes

Already opened, potentially looks like it has been read multiple times. Is she carrying it with an envelope?

Love's Labor's Won

Director: Dana Dancho
 Scenic Designer: Emily Lotz
 Properties Designer: Mattie Ruona
 Assistant Properties Designer: Elliot Cross



Microphone Stand



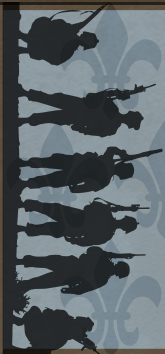
| <i>Page #</i> | <i>Act</i> | <i>Type</i> | <i>Quantity</i> |
|---------------|------------|--------------|-----------------|
| 38 | 1.3 | Set Dressing | 1 |

Notes

Microphone will not function. Comet spring mic is an example of mics that were used in 1918.

Love's Labor's Won

Director: Dana Dancho
Scenic Designer: Emily Lotz
Properties Designer: Mattie Ruona
Assistant Properties Designer: Elliot Cross



Flask



| <i>Page #</i> | <i>Act</i> | <i>Type</i> | <i>Quantity</i> |
|---------------|------------|-------------|-----------------|
| 39 | 1.3 | Hand Prop | 1 |

Notes

Opaque, no liquid.

Love's Labor's Won

Director: Dana Dancho

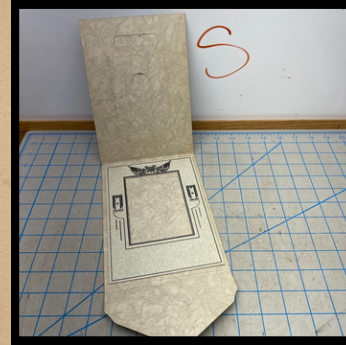
Scenic Designer: Emily Lotz

Properties Designer: Mattie Ruona

Assistant Properties Designer: Elliot Cross



Photo of Rosaline



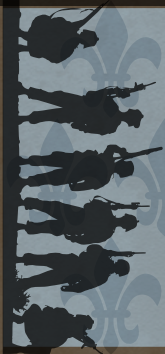
| <i>Page #</i> | <i>Act</i> | <i>Type</i> | <i>Quantity</i> |
|---------------|------------|-------------|-----------------|
| 40 | 1.3 | Hand Prop | 1 |

Notes

Black and white or sepia (research)? Is the photo in something protective? Will need to take a photo of the actress playing Rosaline (discuss with Costumes what she could wear).

Love's Labor's Won

Director: Dana Dancho
 Scenic Designer: Emily Lotz
 Properties Designer: Mattie Ruona
 Assistant Properties Designer: Elliot Cross



A Yellowing, Crumpled Paper



| Page # | Act | Type | Quantity |
|--------|-----|-----------|----------|
| 62 | 1.6 | Hand Prop | 1 |

Notes
A clipping from a newspaper. (In French or English?)



Love's Labor's Won

Director: Dana Dancho
 Scenic Designer: Emily Lotz
 Properties Designer: Mattie Ruona
 Assistant Properties Designer: Elliot Cross



Article



| Page # | Act | Type | Quantity |
|--------|-----|-----------|----------|
| 81 | 2.9 | Hand Prop | 1 |

Notes

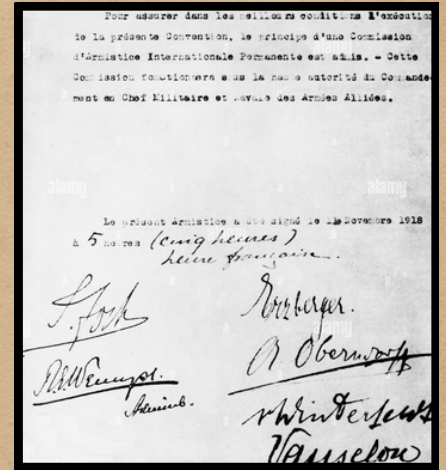
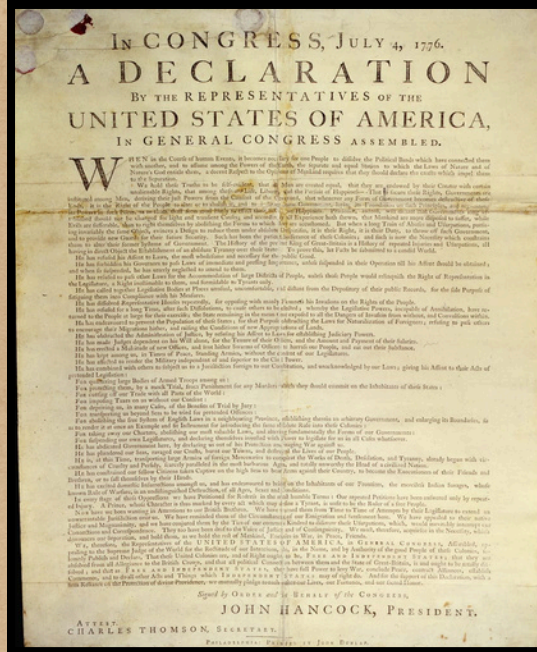
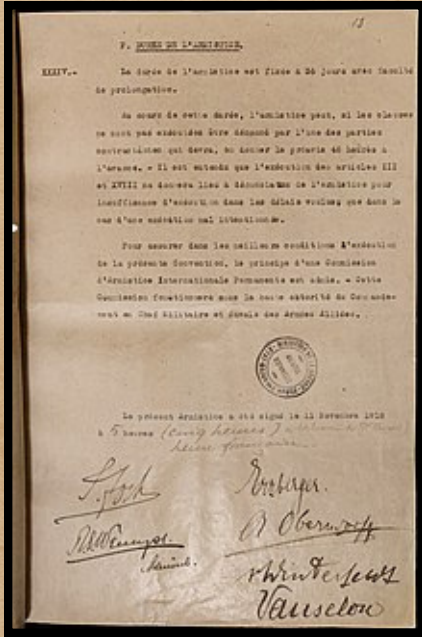
I believe this is supposed to be an article that Rosaline (as Lanier) wrote about Berowne. From a magazine or a newspaper?

Love's Labor's Won

Director: Dana Dancho
 Scenic Designer: Emily Lotz
 Properties Designer: Mattie Ruona
 Assistant Properties Designer: Elliot Cross



A Copy of the Armistice



| Page # | Act | Type | Quantity |
|--------|------|-----------|----------|
| 110 | 2.12 | Hand Prop | 1 |

Notes
A large sheet of paper. Research what the actual armistice looked like - also think Declaration.



Love's Labor's Won

Director: Dana Dancho
 Scenic Designer: Emily Lotz
 Properties Designer: Mattie Ruona
 Assistant Properties Designer: Elliot Cross



Wheelchair



Page #
116

Act
2.12

Type
Furniture

Quantity
1

Notes

Left option has handles and is more compact. Right option is larger and has no handles, but looks better. Both work.

Love's Labor's Won

Director: Dana Dancho

Scenic Designer: Emily Lotz

Properties Designer: Mattie Ruona

Assistant Properties Designer: Elliot Cross





Furniture



Love's Labor's Won

Director: Dana Dancho

Scenic Designer: Emily Lotz

Properties Designer: Mattie Ruona

Assistant Properties Designer: Elliot Cross



Chaise Lounge or Sofa



Location
Palace

Type
Furniture

Quantity
1

Notes

I like the smaller yellow one (bottom left corner). The navy blue one is very short and not a color I think will go well onstage.

Love's Labor's Won

Director: Dana Dancho

Scenic Designer: Emily Lotz

Properties Designer: Mattie Ruona

Assistant Properties Designer: Elliot Cross



Table for Gramophone



Location
Palace

Type
Furniture

Quantity
1

Notes

Lyre table might be too big. Also, we don't have a gramophone.

Love's Labor's Won

Director: Dana Dancho

Scenic Designer: Emily Lotz

Properties Designer: Mattie Ruona

Assistant Properties Designer: Elliot Cross



Armchair



Location
Palace

Type
Furniture

Quantity
1

Notes

Second from the right would need reupholstering.

Love's Labor's Won

Director: Dana Dancho

Scenic Designer: Emily Lotz

Properties Designer: Mattie Ruona

Assistant Properties Designer: Elliot Cross



Round Table



Location
Great Hall

Type
Furniture

Quantity
1

Notes

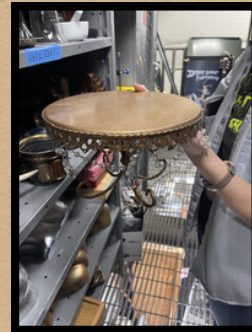
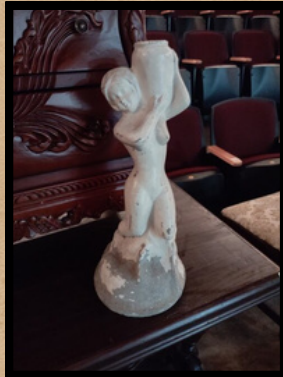
Did not find any round tables. Possible purchase.

Love's Labor's Won

Director: Dana Dancho
Scenic Designer: Emily Lotz
Properties Designer: Mattie Ruona
Assistant Properties Designer: Elliot Cross



Centerpiece



| <i>Location</i> | <i>Type</i> | <i>Quantity</i> |
|-----------------|-------------|-----------------|
| Great Hall | Furniture | 1 |

Notes

We have lots of flowers as long as we go with white/pastel. Need to check on runners.

Love's Labor's Won

Director: Dana Dancho
 Scenic Designer: Emily Lotz
 Properties Designer: Mattie Ruona
 Assistant Properties Designer: Elliot Cross



Small Wood Stool



Location
Palace Dungeon

Type
Furniture

Quantity
1

Notes

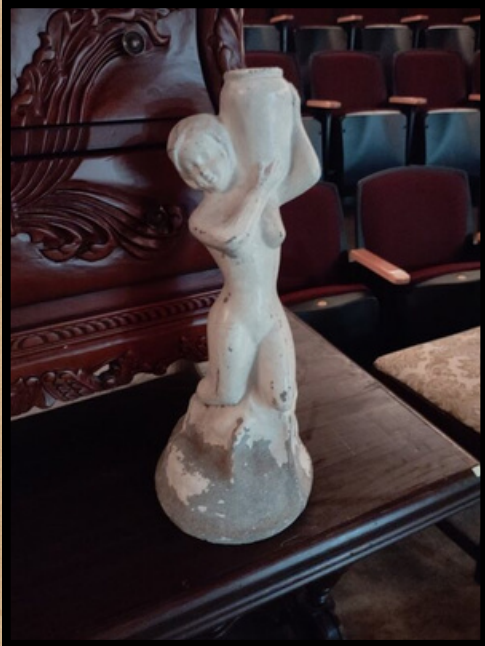
Shorter stool (left): 18" tall. Taller stool (right): 23" tall.

Love's Labor's Won

Director: Dana Dancho
Scenic Designer: Emily Lotz
Properties Designer: Mattie Ruona
Assistant Properties Designer: Elliot Cross



Statue



Location
Palace Gardens

Type
Furniture

Quantity
1

Notes

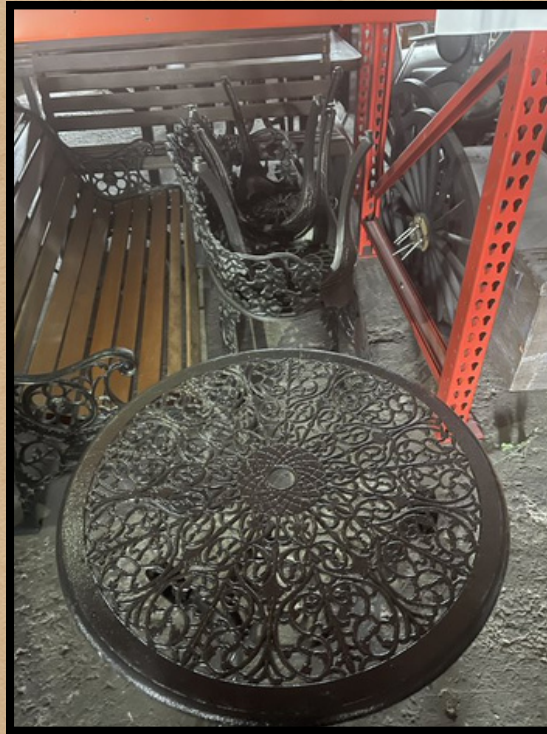
We have a broken version of the lady if that is desired. The angel would just need new facing on the front of its stand.

Love's Labor's Won

Director: Dana Dancho
Scenic Designer: Emily Lotz
Properties Designer: Mattie Ruona
Assistant Properties Designer: Elliot Cross



Wrought Iron Garden Set



Location
XXX

Type
Furniture

Quantity
1

Notes

Table, two chairs, bench. Any combination of them would work. The table doesn't really match the chairs but no one would notice.

Love's Labor's Won

Director: Dana Dancho

Scenic Designer: Emily Lotz

Properties Designer: Mattie Ruona

Assistant Properties Designer: Elliot Cross

